

Master II Series (1P/1P)-Rack/Tower

PRO800-ERS/ERL SERIES 1-3KVA



PROLiNK Master II Series (1P/1P) Rack / Tower Type is a true online double conversion single phase UPS system which is designed to deliver clean and high quality electrical power to fully protect critical devices in wide range of applications. High input power factor correction in the system improves the efficiency and reduces overall losses.

UPS is equipped with 3-stage smart charging design to optimize battery performance. This feature extends the useful service life of battery and optimizes battery recharge time.

The front panel LCD display comes with rotation feature which to be used for both rack and tower types. The UPS systems have USB and RS-232 communication ports as standard, with a built-in intelligent slot for additional adapters, protocol converters and relay contact cards. SNMP option is also available for power management via SNMP manager and web browser.

PROLiNK Master II series (1P/1P) Rack /Tower p.f 0.9 Type is available in capacities ranging from 1KVA to 3KVA.

In addition, Emergency Power Off (EPO) function is also available for the UPS models and which is used to protect the personnel and the equipment in case of fire outbreak or other types of emergency.

- **True double-conversion online UPS**
- **Output power factor 0.9**
- **User-friendly and easy-shift LCD display**
- **Rack/Tower design**
- **Programmable power management outlets**
- **50/60 Hz frequency converter mode**
- **ECO and advanced ECO mode for energy saving**
- **Emergency Power Off Function (EPO)**
- **Hot-swappable battery design**



CCTV & Security
Systems



Local Area
Network (LAN)



Work-Stations



Servers



Storage
PLCS

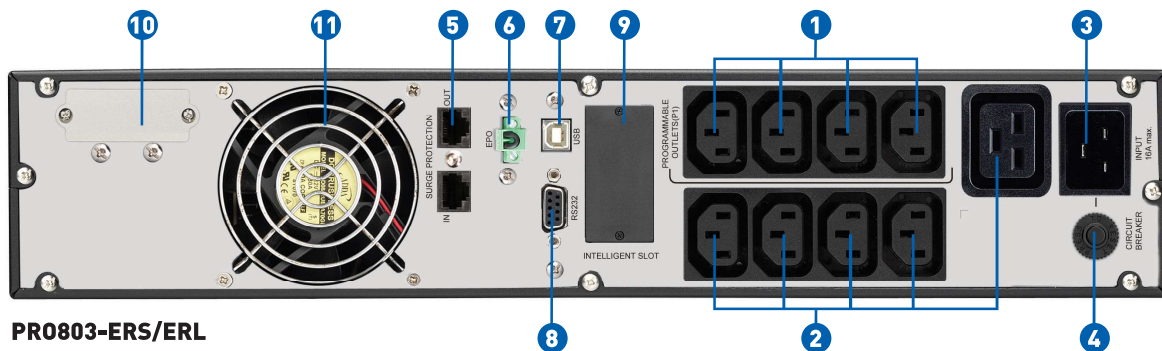
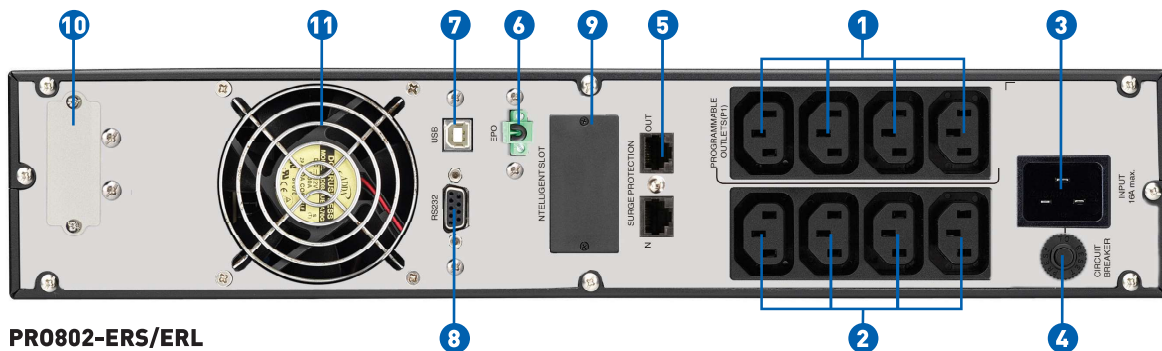
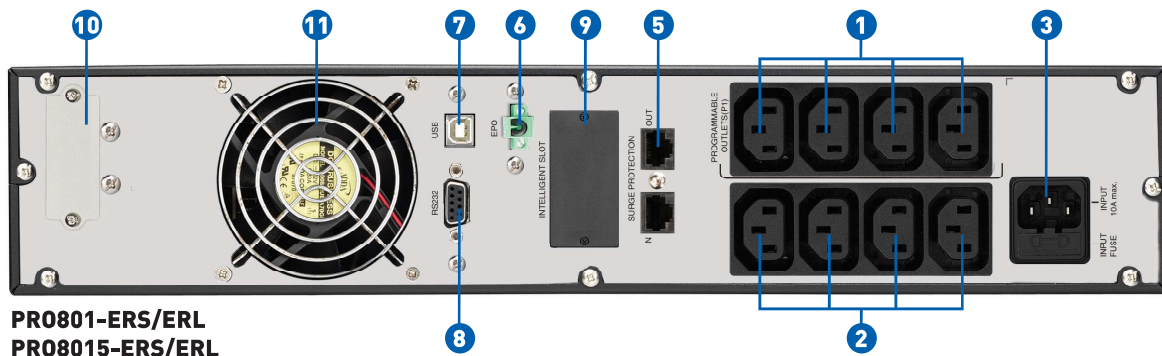


19" Rack
Mount

Rear Panel

1-3KVA

1. Programmable outlets: connect to non-critical loads
2. Output receptacles: connect to mission-critical loads
3. AC input
4. Input circuit breaker
5. Network/Fax/Modem surge protection
6. Emergency power off function connector (EPO)
7. USB communication port
8. RS-232 communication port
9. Intelligent slot
10. External battery connector
11. Cooling Fan



Full Specifications



MODEL		PRO801-ERS/ERL		PRO8015-ERS/ERL		PRO802-ERS/ERL		PRO803-ERS/ERL			
PHASE		Single phase with ground									
CAPACITY	VA	1000 VA		1500 VA		2000 VA		3000 VA			
	W	900 W		1350 W		1800 W		2700 W			
INPUT											
Nominal Voltage		200/208/220/230/240 VAC									
Voltage Range		110-300 VAC ± 5%									
Frequency Range		40Hz ~ 70Hz									
Power Factor		≧ 0.99 @ Nominal Voltage (100% Load)									
OUTPUT											
Output Voltage		200/208/220/230/240 VAC									
AC Voltage Regulation (Batt. Mode)		± 1%									
Frequency Range (Synchronized Range)		47 ~ 53 Hz or 57 ~ 63 Hz									
Frequency Range (Batt. Mode)		50 Hz ± 0.5% or 60Hz ± 0.5%									
Current Crest Ratio		5:1 (max.)									
Harmonic Distortion		≦ 2 % THD (Linear Load) ; ≦ 4 % THD (Non-linear load)									
Transfer Time	AC Mode to Battery Mode		Zero								
	Inverter to Bypass		4 ms (Typical)								
Waveform (Batt. Mode)		Pure Sinewave									
EFFICIENCY											
AC Mode		87%		88%		88%		89%			
ECO Mode		94%		95%		95%		97%			
Battery Mode		85%		86%		86%		87%			
BATTERY											
Battery Type		12 V / 9 Ah		Depending on the capacity of external batteries	12 V / 9 Ah		Depending on the capacity of external batteries	12 V / 9 Ah			
Numbers		2			3			4		6	
Typical Recharge Time		4 hours recover to 90% capacity			4 hours recover to 90% capacity			4 hours recover to 90% capacity		4 hours recover to 90% capacity	
Charging Current (max.)		1.0 A		1A / 2A / 4A / 8A		1.0 A		1A / 2A / 4A / 8A			
Charging Voltage		27.4 VDC ± 1%		41.1 VDC ± 1%		54.7 VDC ±1%		82.1 VDC ±1%			
INDICATORS											
LCD Display		Load level, Battery level, AC mode, Battery mode, Bypass mode, and Fault indicator									
ALARM											
Battery Mode		Sounding every 4 seconds									
Low Battery		Sounding every second									
Overload		Sounding twice every second									
Fault		Continuously sounding									
PHYSICAL											
Dimension, D x W x H (mm)		410 x 438 x 88 [2U]		510 x 438 x 88 [2U]		510 x 438 x 88 [2U]		630 x 438 x 88 [2U]			
Net Weight (kgs)		12.9	8.6	17.6	10.7	20.6	11.3	28	13.8		
ENVIRONMENT											
Humidity		20-90 % RH @ 0- 40°C (Non-condensing)									
Noise Level		Less than 50dBA @ 1 Meter									
MANAGEMENT											
Smart RS-232 / USB		Supports Windows ² 2000/2003/XP/Vista/2008, Windows ² 7/8/10, Linux, Unix, and MAC									
Optional SNMP		Power management from SNMP manager and web browser									
COMPLIANCE STANDARDS											
Safety		IEC/EN 62040-1									
EMC		IEC/EN 62040-2									
Performance		IEC/EN 62040-3									

**Derate to 80% when the output voltage is adjusted to 200VAC/208VAC.

Product specifications are subject to change without further notice.

100/110/115/120/127VAC input and output is available as an option for 1~3KVA