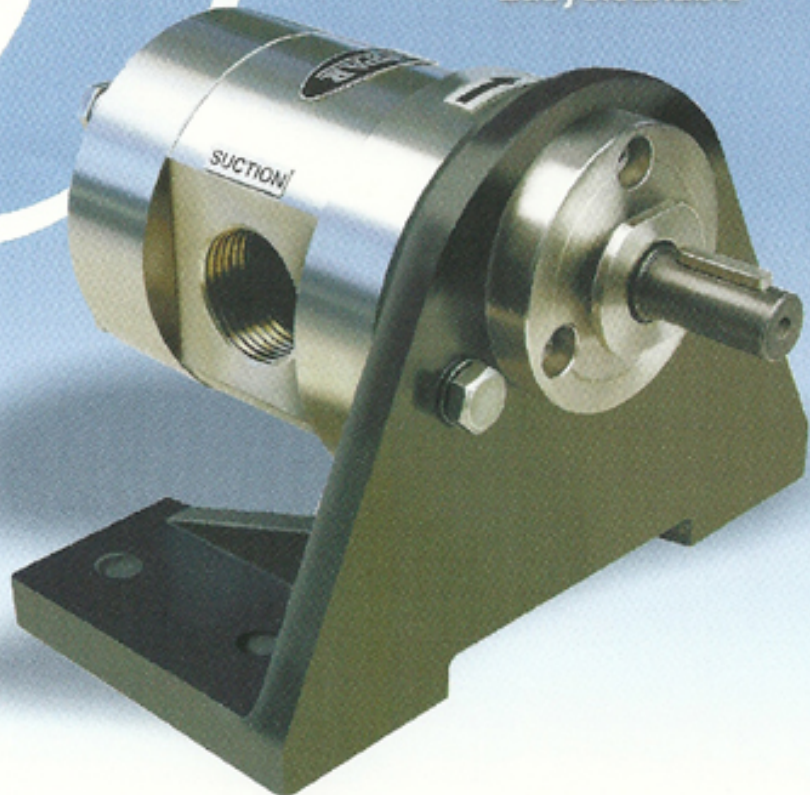


Complete SS316



Type - CGSS

- Compact
- Efficient
- Economical
- Easy Maintainable
- Easy cleanable

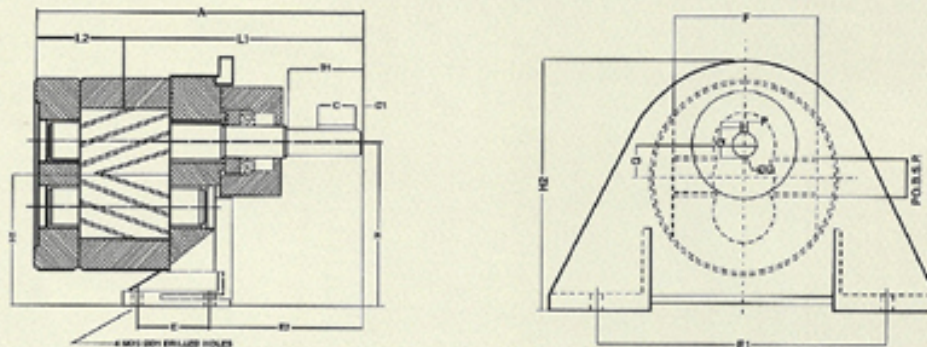


- For Handling Corrosive, Abrasive, Hygienic Viscous Liquids & Chemicals
- For loading-uploading & transfer application.

A Perfect Way of Pumping Viscous Liquids

"ROPAR" Rotary gear pump type CGSS is self priming bi directional positive displacement pumps in all ss-316 construction, case nitrided shafts & gear supported on either side of 4, nos. teflon coated self lubricated dry bush bearings. This pumps are simple three construction, easy cleanable, the back cover can simply be removed by 4, nos hex bolt.

MODEL	PORT SIZE BSP	CAPACITY at 1400 RPM			POWER CONSUMPTION IN BHP AT DIFFERENTIAL PRESSURE OF 'X'Kg/cm WITH 1500 SSU VISCOCITY										APPROX WT. IN Kg.
		M3/hr	LPM	US GPM	'X'1	2	3	4	5	6	7	8	9	10	
CGSS-025	1/4" X 1/4"	1.30	5.00	0.30	0.10	0.11	0.12	0.13	0.14	0.15	0.16	0.17	0.18	0.19	1.80
		2.20	8.33	0.60	0.15	0.17	0.19	0.22	0.24	0.26	0.28	0.30	0.33	0.36	2.00
CGSS-040	3/8" X 3/8"	4.40	16.66	1.00	0.25	0.30	0.34	0.39	0.43	0.48	0.54	0.60	0.65	0.72	3.00
CGSS-050	1/2" X 1/2"	6.60	25.00	1.50	0.32	0.38	0.44	0.49	0.56	0.61	0.70	0.78	0.85	0.94	3.50
CGSS-075	3/4" X 3/4"	8.80	33.33	2.00	0.35	0.42	0.50	0.58	0.66	0.75	0.82	0.92	1.00	1.10	4.50
CGSS-100	1" X 1"	13.20	50.00	3.00	0.40	0.50	0.60	0.75	0.89	1.04	1.17	1.29	1.45	1.60	5.00
CGSS-125	1 1/2" X 1 1/2"	26.40	100	6.00	0.80	1.16	1.54	1.95	2.20	2.42	2.65	2.92	3.15	3.32	6.00
CGSS-150	1 1/2" X 1 1/2"	33.00	125	7.50	1.00	1.35	1.82	2.20	2.65	3.02	3.34	3.73	4.12	4.46	10.500
		39.60	150	9.00	1.33	1.88	2.46	2.95	3.35	3.85	4.28	4.72	5.20	5.80	20.500
CGSS-200	2" X 2"	52.80	200	12.00	1.80	2.25	2.92	3.56	4.20	4.75	5.28	5.98	6.45	7.10	24.00



SIZE	A	B1	C	C1	D	D1	E	E1	E2	F	G	H	H1	H2	L1	L2	P	Q	PQ.B.S.P.
025	128	25	17	3	11.5	8	40	120	72	54	12	63	50.5	101	94	35	3	13	1/4" X 1/4"
040	134	25	17	3	11.5	8	50	125	75	61	14	80	66	121	98.5	35.5	4	13	3/8" X 3/8"
050	146	25	17	3	11.5	8	50	125	77	61	14	80	66	121	104	42	4	13	1/2" X 1/2"
075	169	35	25	3	14	10.5	53.5	140	82.5	72.5	17	100	83	143	123	46	5	16	3/4" X 3/4"
100	179	35	25	3	14	10.5	53.5	140	92.5	72.5	17	100	83	143	128	51	5	16	1" X 1"
125	212	38	30	3	18	12	50	178	98.5	90	21	112	91	161	146	66	6	20.5	1 1/2" X 1 1/2"
150	220	38	30	3	18	12	50	178	101	90	21	112	91	161	156	73	6	20.5	1 1/2" X 1 1/2"
200	259	40	30	5	24	14	75	190	107	103	25	132	107	132	174	85	8	27	2" X 2"
200	283	40	30	5	24	14	75	190	107	103	25	132	107	187	188	97	8	27	2" X 2"

01	PUMP BODY	S.S 316	05	R.H. & L.H. GEAR	S.S 316	09	BRACKET	C.IOR -2018-210
02	FRONT COVER	S.S 316	06	ROTOR SHAFT	S.S 316	10	SEALING	'Z' PACK TEFLON
03	BACK COVER	S.S 316	07	STATOR SHAFT	S.S 316	11	FASTNERS	AISI-SS-316
04	SEAL COVER	S.S 316	08	BUSH	TEFLON COATED	12	PACKING	TEFLON

All CGSS Series pumps are designed to run at 1440 RPM for liquid having low viscosity up to 500 cst. Pump size up to 1" can safely be run at 1440 RPM even at higher viscosity up to 1000 cst with additional h.p. for size above 1" reduce the speed to 960 rpm for viscosity up to 1000 cst for higher viscosity consult the manufacturer to avoid cavitation & over loading.

This CGSS series pumps are ideally suitable for handling viscous corrosive chemicals like mild acid, fenol etc. in chemical industries, food products like, Ghee, butter, vegetable souce, kanji, fruit pulp, ice-cream, vegetable oil, these are also used in pharmaceutical industries for handling, glycerin, glycol, glucose, sugar solution, syrup etc. This pumps also used for handling printing ink dyes, slurry, kerosine, neptha etc.

MADE IN INDIA

Authorised Dealer :



DI ENGINEERS