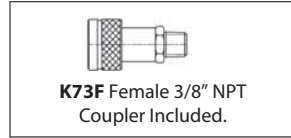
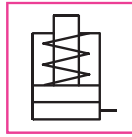


Single-Acting, Spring Return, General Purpose Cylinders

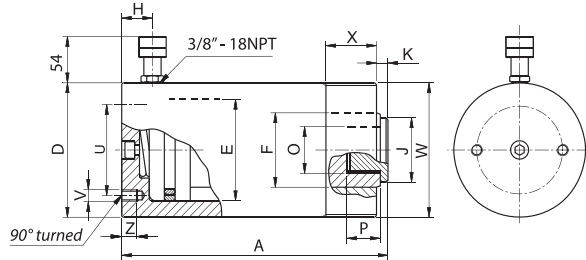
CMI Series



Capacity:
5 - 100 tonnes

Stroke:
25 - 350 mm

Maximum Operating Pressure:
700 bar (10,000 psi)



ZTT Tilt Saddle (Optional) – to reduce the effects of any off-centred loads. Refer Page 23.



- Superior Bearing Design reduces wear & prolongs life.
- Collar threads, piston rod internal threads & base mounting holes provides easy fixturing & adaptability.
- Operate in any directional position.
- Heavy-duty spring improves retracting speed.
- Removable hardened grooved saddle for good load grip.
- Wiper seal prevents dirt penetration & extends cylinder working life.
- Nitride anti-corrosive treatment provides excellent corrosion & wear resistance in harsh environments.
- Carrying handle for 50 tonnes & above models.
- Extremely versatile & suitable for wide range of industrial applications.

SELECTION CHART

Force (PUSH) Tonnes (kN)	Stroke mm	Effective Area cm ²	Oil Volume cm ³	MODEL	Closed Height	Outside Dia.	Bore Dia.	Piston Rod Dia.	Coupler Height	Saddle Dia.	Rod Protrusion	Rod Internal Thread	Rod Thread Depth	PCD Mounting Holes	Base Mounting Holes/ Holes Depth	Collar thread/ Thread Length	Weight
					A mm	D mm	E mm	F mm	H mm	J mm	K mm	O mm	P mm	U mm	V/Z mm	W/X mm	kg
5 (49,5)	25	7,07	18	CMI5N25	92	40	30	25	19	24,5	2	M16x1,5	14	25	M6 10	M40x1,5 28	1,1
	50	7,07	35	CMI5N50	117												1,3
	75	7,07	53	CMI5N75	142												1,5
	125	7,07	88	CMI5N125	202												1,9
	175	7,07	124	CMI5N175	252												2,3
	225	7,07	159	CMI5N225	302												2,7
10 (111)	25	15,86	40	CMI10N25	83	60	45	35	19	33⊗	1⊗	-	-	-	M8 12	M60x1,5 28	2,0
	50	15,86	80	CMI10N50	120												2,6
	100	15,86	159	CMI10N100	170												3,5
	150	15,86	238	CMI10N150	245												4,7
	200	15,86	318	CMI10N200	295												5,6
	250	15,86	398	CMI10N250	345												6,5
	300	15,86	477	CMI10N300	408												9,03
	350	15,86	557	CMI10N350	458												10
25 (232)	25	33,14	83	CMI25N25	119	85	65	55	19	53	9	M32x2	16	58	M10 14	M85x2 40	4,6
	50	33,14	166	CMI25N50	144												5,3
	100	33,14	332	CMI25N100	214												7,5
	150	33,14	498	CMI25N150	264												8,8
	200	33,14	664	CMI25N200	314												10,2
	250	33,14	830	CMI25N250	364												11,6
	300	33,14	996	CMI25N300	414												13,0
	350	33,14	1161	CMI25N350	464												15,0
30 (309)	210	44,14	928	CMI30N210	386	102	75	55	47	53	9	M32x2	16	-	-	3 5/16"-12 49	18,4
50 (496)	50	70,86	354	CMI50N50	164	127	95	80	25	65	4	M16	12	95	M12 18	M125x2 40	14,2
	100	70,86	709	CMI50N100	214												17,4
	150	70,86	1063	CMI50N150	264												20,8
	325	70,86	2304	CMI50N325	439												32,6
100 (929)	100	132,71	1327	CMI100N100	246	175	130	100	26	85	4	M16	17	140	M12 18	M168x2 51	39,6
	150	132,71	1991	CMI100N150	296												46,0

Nominal value shown in 'Tonnes', see kN for the exact force @700bar. ⊗ Mounting holes for ZTT10 tilt saddle