

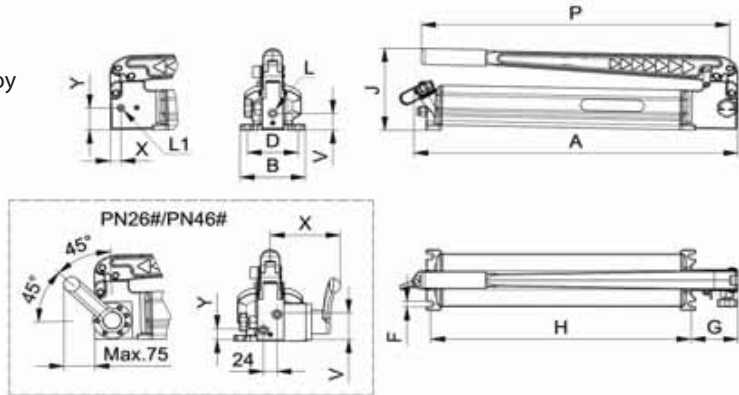
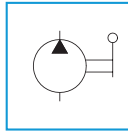
Lightweight Hand Pumps (Single & Two-Speed)

PN Series

Reservoir Capacity:
0,7 to 7,8 litres

Oil Delivery at Rated Pressure:
1,1 - 2,7 cu.cm./stroke

Maximum Operating Pressure:
700 bar (10,000 psi)



Pumps can be altered for use with other fluids other than standard hydraulic oil upon request.



Handle Lever Lock



Rear Venting Plug



* Direct Gauge Port (1/4" NPT)

- Compact and lightweight design.
- Made of durable high strength light aluminum alloy metal that is being used in aviation field.
- Two-speed operation reduces handle strokes & for fast operation comparing with single speed.
- Handy & very low handle effort to minimise operator fatigue.
- Handle lever lock for ease of carrying.
- Side or front port for direct gauge connection except 'PN26' version.
- Equipped with externally adjustable pressure relief valve.
- Rear venting plug allow pump to use without venting & for easy oil filling in either horizontal or vertical position.
- Can be used vertically with pump body facing downward.
- Feature easy pump mounting.
- **'PN26' version** – Equipped with integral 4-way manual valve for operating double-acting cylinder/s.
- **'PN46' version** – Equipped with pilot-check valve to enable precise controlled retraction of double-acting cylinder under load when pump is in discharge position.
- **'PNP' version** – Comes with plastic reservoir for pump primarily used in fixed operations.

SELECTION CHART

Pump Type (Speed)	Pressure 1st Stage	Pressure 2nd Stage	Oil Delivery per Stroke 1st Stage	Oil Delivery per Stroke 2nd Stage	Handle Effort	For use in Cylinder Tool	Reservoir Capacity	Usable Oil Volume	MODEL	Dimensions (mm)										Weight				
										A	B	D	G	H	F	J	L	*L1	P		V	X	Y	kg
Single	-	-	-	1,4	426	Single-acting	litre	litre	PNP130	362	110	90	52	275	11	135	3/8"NPT	1/4"NPT	330	32	14	44	3,0	
									PNP131	551	110	90	52	460	11	135			554	32	14	44	4,0	
									PNP140	362	110	90	52	275	11	135			330	32	14	44	3,0	
									PNP141	551	110	90	52	460	11	135			544	32	14	44	4,0	
									PN131	572	115	90	83	460	11	154			544	32	18	42	4,8	
									PN132	572	128	105	83	460	11	169			544	47	18	57	6,2	
Two	30	700	-	2,7	363	Single-acting	litre	litre	PN141	572	115	90	83	460	11	154	3/8"NPT	1/4"NPT	544	32	18	42	4,8	
									PN142	572	128	105	83	460	11	169			544	47	18	57	6,2	
									PN162	572	128	105	83	460	11	173			544	32	18	55	6,6	
									PN164	572	190	176	90	471	9	173			544	32	18	55	9,8	
									PN168	652	270	256	90	551	9	173			544	32	18	55	14,5	
									PN262	572	128	105	83	460	11	173			544	52	124	22	7,4	
	Double-acting	70	-	28,5	2,7	363	Double-acting	litre	litre	PN142	572	128	105	83	460	11	173	3/8"NPT	-	544	52	124	22	10,6
										PN268	652	270	256	90	551	9	173			544	52	124	22	15,3
										PN462	572	128	105	83	460	11	173			544	52	148	22	7,7
										PN464	572	190	176	90	471	9	173			544	52	148	22	10,9
										PN468	652	270	256	90	551	9	173			544	52	148	22	15,6
										Pilot-check	7,8	7,2	-	-	-	litre	litre			PN462	572	128	105	83
PN464	572	190	176	90	471	9	173	544	52	148								22	10,9					
PN468	652	270	256	90	551	9	173	544	52	148								22	15,6					

• 1 litre = 1000 cm³